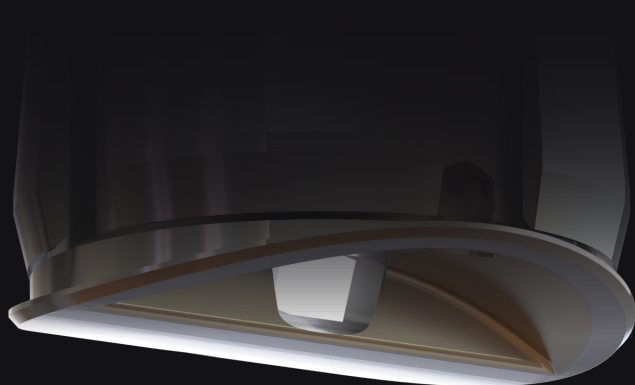




PLANET
LIGHTING



[DATASHEET](#)

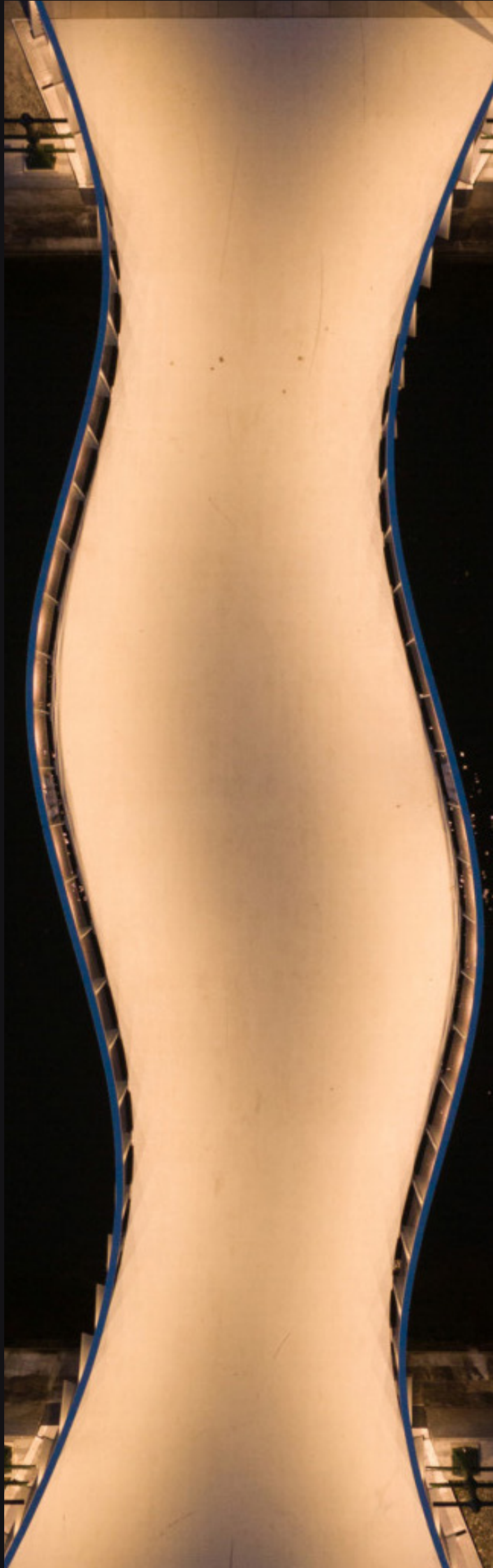
PLANET LED PUCK SNAP UNI

Superior Beam Control Meets Maximum Uniformity

The next revolution in integrated lighting and uniformity performance is here.

Snap Uni is a completely redesigned and optimised Snap luminaire for superior beam and glare control – now providing up to double the performance in uniformity.

It's everything we believe handrail lighting should be, and more.



SNAP UNI

The next revolution in integrated lighting and uniformity performance is here.

Snap Uni combines the best of our Planet LED Puck Snap family with an all-new design for exceptional beam and glare control, now delivering up to twice the uniformity performance.

SPECIFICATIONS*



Intertek

Intertek

ETLus conforms to UL2108

cETL conforms to CSA C22.2 #250.0

Technical

1.4W / 500mA / 2.8Vf

CRI 80+ (90+ optional)

3 Step MacAdam Ellipse

$L_{90} B_{10} > 100,000 h^+$

Performance

135lm (3000K)

144lm (4000K)

Colour

CCT options from 2200K to 7000K,
and 17 colours

Distribution

Elliptical asymmetric distribution

Material

316 Stainless Steel, electropolished

Ambient Operating Conditions

Min. -40°C / Max. 55°C

Protection Class

IK10 | IP68 (2m for 2 weeks)

Electrical

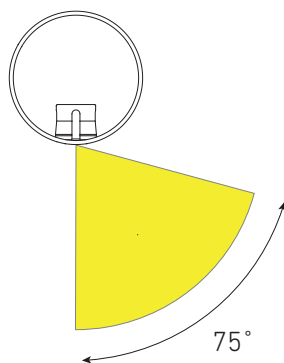
CoolsplICE Connector

Installation

- **Installation Surface:**
 - » Metal substrates only
 - » Min. 1.5 mm Wall Thickness
 - » Min. Ø35 mm Rail (Curved face only)
- **Hole Size:**
 - » Ø15 mm (Counterbore is required for a flush finish)
- **Counterbore:**
 - » Ø16 mm x 1.6 mm (Curved Face)
 - » Ø16 mm x 0.5 mm (Flat Face)

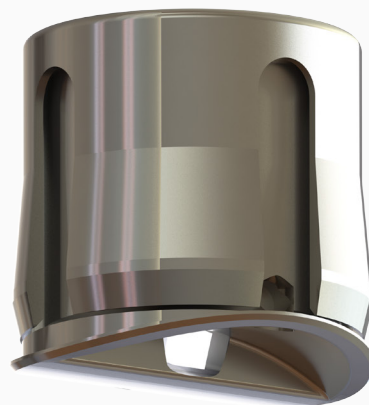
Control

1-10 v | DALI | DMX | ZigBee | Casambi
Blue Light Link | BasicDIM Wireless



Snap Uni's elliptical asymmetric distribution has a forward throw and sharp cut off to help eliminate back spill.

Engineer the experience
with Snap Uni.



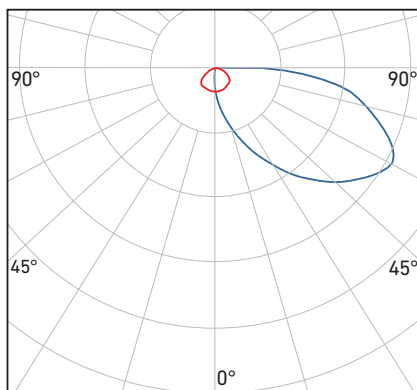
*Test for LED emitter at 500 mA and below 55°C ambient temp.

*Specifications are subject to change without notice.

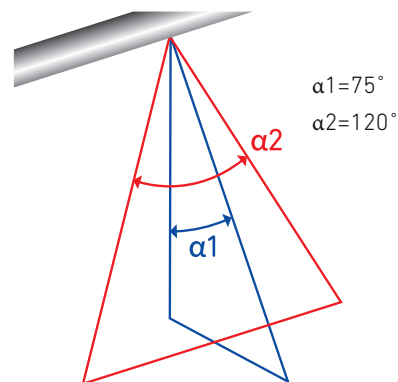


PHOTOMETRICS

Snap Uni has a unique elliptical asymmetric distribution producing an extensive forward throw with high uniformity and no glare. Designed for insertion at 0 degrees from the vertical axis of a handrail's underside, Uni illuminates the path but keeps the light source out of sight.



Uni beam 4000 K












LED OPTIONS

CCT from 2200K to 7000K

Also available in 17 colours:

Violet, royal blue, blue, PC blue, cyan, PC cyan, green, PC lime, PC mint, PC yellow, amber, PC amber, red-orange, PC red-orange, red, PC red, and photo red.

	2200K (22)		4000K (40)
	2700K (27)		5000K (50)
	3000K (30)		5700K (57)
	3500K (35)		6500K (65)
			7000K (70)

White WT Cool					White WT Neutral	White WT Warm	PhotoRed HR 650-670nm
Violet VL 400-420nm	Royal Blue RY 450-460nm	Blue BL 460-475nm	Cyan CY 490-510nm	Green GR 520-535nm	Amber AM 585-595nm	Red-Orange RO 610-620nm	Red RD 620-630nm
		Phosphor PB Blue	Phosphor PC Cyan	Phosphor PL Lime	Phosphor PA Amber	Phosphor PO Red-Orange	Phosphor PR Red
				Phosphor PM Mint	Phosphor PY Yellow		

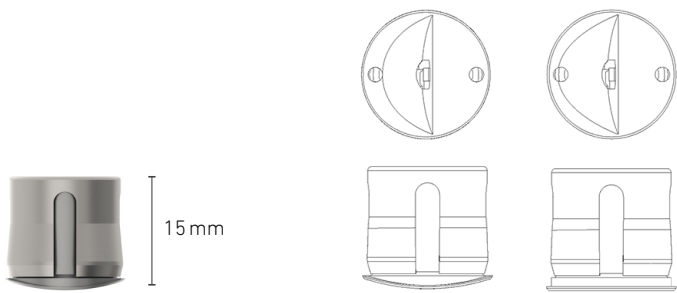
**Spec Your
Planet LED Puck**
The Way You Want It!



LUMINAIRE DETAIL

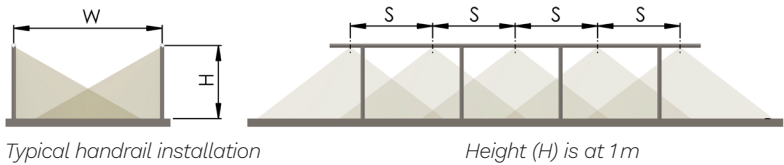
Featuring a push-to-snap-in design, Snap Uni's collapsible shell module enables a quick and secure installation. Available in curved or flat face. Custom curvature <35mm is also available.

Suitable for a range of rail types, square and curved as well as surface types.



Quick installation: Push to snap in

Available in curved or flat face



Path Width (W)	1.2 m	2.0 m	3.0 m	4.0 m
LED Spacing (S)	lx	lx	lx	lx
0.5m	291	174	116	87
1.0m	145	87	58	44
2.0m	73	44	29	22

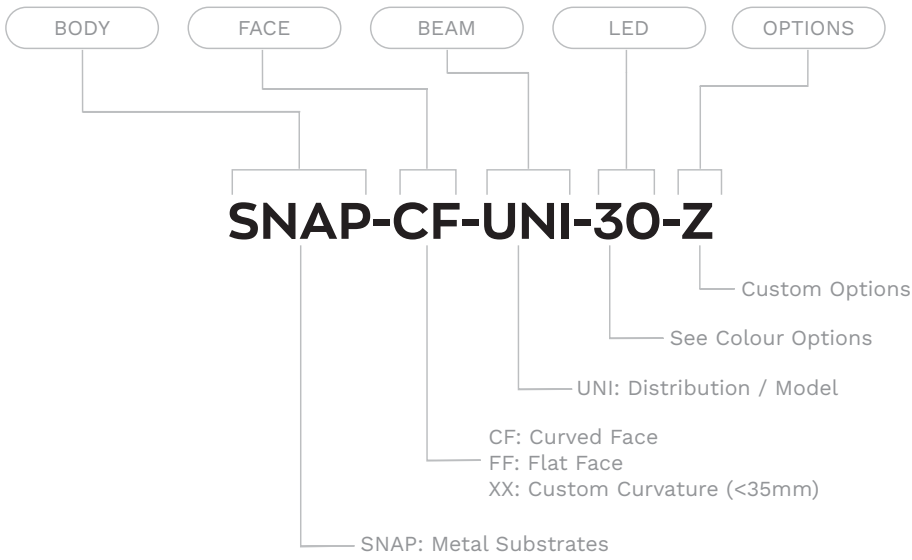
Light from both sides

lx = average lux
CCT = 4000 K
Note: Calculations indicated are with LED module in vertical down position.



PRODUCT CODE BUILDER

See our Spec Your Planet LED Puck info sheets or website for more configuration options.



TYPICAL SPECIFICATIONS

Product Code	Specifications
SNAP-CF-UNI-30	Snap Body, Curved Face, Uni, 3000 K
SNAP-CF-UNI-40	Snap Body, Curved Face, Uni, 4000 K
SNAP-FF-UNI-30	Snap Body, Flat Face, Uni, 3000 K
SNAP-FF-UNI-40	Snap Body, Flat Face, Uni, 4000 K



Ask Us
Your success is important to us.
Get in touch with your
Planet LED Puck supplier today.

*Specifications are subject to change without notice.